

## Dutcher Cove

July 2007

### Case Inlet Shoreline Association

**Mission:** preserving and protecting Case Inlet for future generations, focusing on community stewardship, education and scientific research.



**New invasive methods of aquaculture are threatening our pristine shorelines.**

Dutcher Cove  
July 2007



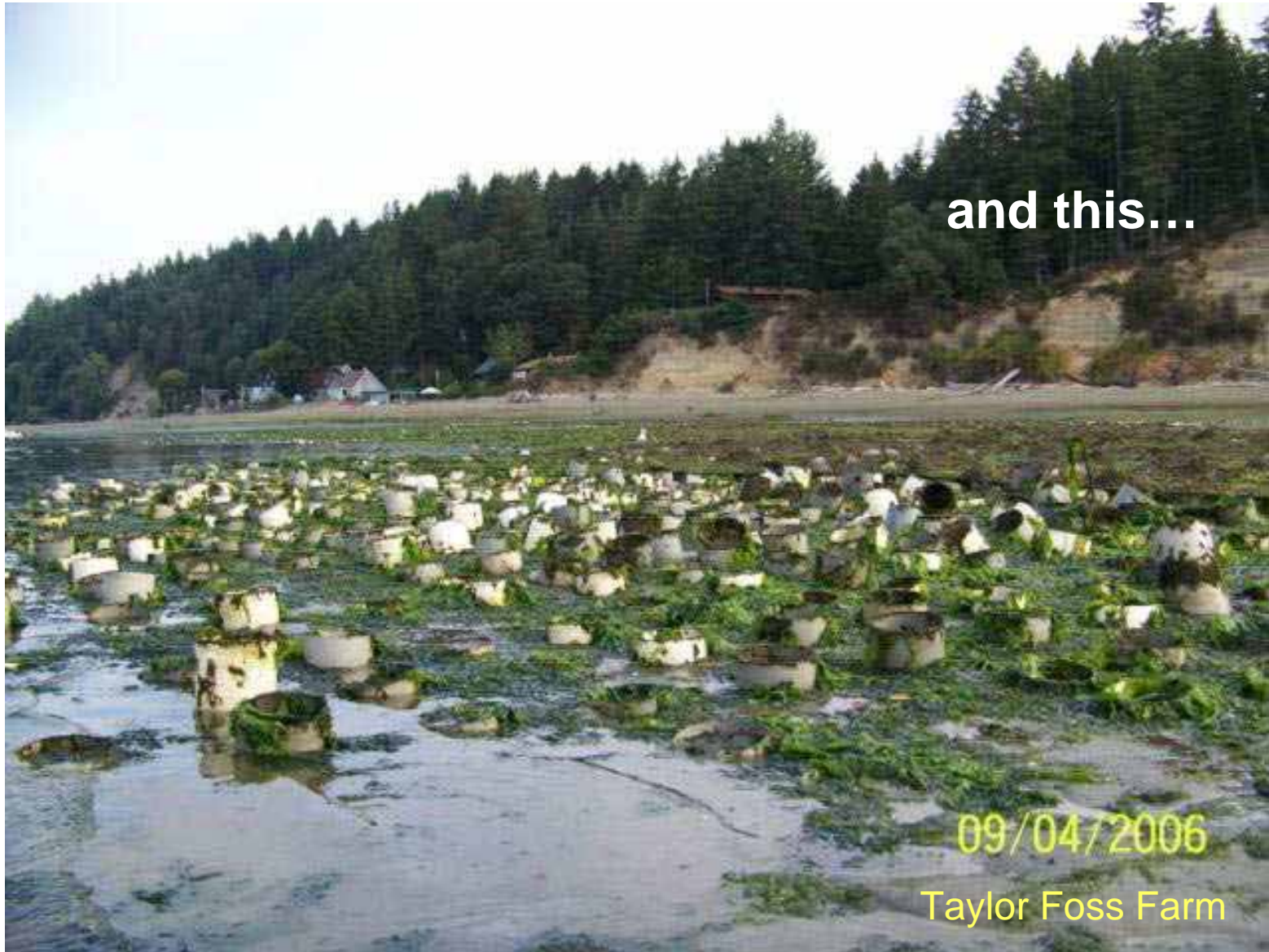
**Natural inter tidelands like this...**

Dutcher Cove  
October 2007

**are converted to industrial farms like this...**



Zangle Cove, 2006



and this...

09/04/2006

Taylor Foss Farm

**43,560 PVC tubes planted per  
acre!**

**and this.**



Totten Inlet, 2006

**In July 2007 an application was submitted to convert 26 acres of Dutcher Cove inter tidelands into an industrial aquaculture farm!**



**Dutcher Cove Lagoon**  
is designated as  
**‘Critical Salmon Habitat’**

The proposed farm would block off the entrance to the lagoon disturbing natural habitat including forage fish, which is essential food for salmon.

SD34-07

# 26 acres targeted for aquaculture!!



Target area for  
aquaculture farm

## Map Legend

- Tax Parcels
- Highlighted Tax Parcels
- County - 2005 - Ortho
- Shoreline Environments
- Urban
- Rural/Residential
- Rural
- Natural
- Conservancy
- Roads
- Interstate
- Limited Access State Routes
- Other State Routes
- Ramps
- Major Arterial

0 100 500 ft.



Printed: 7/25/07 5:24 PM



The map features are approximate and are intended only to provide an indication of said feature. Additional areas that have not been mapped may be present. This is not a survey. The County assumes no liability for violations associated with actual parking. All data is expressly provided AS IS and WITH ALL FAULTS. The County makes no warranty of fitness for a particular purpose.

## A 26 acre aquaculture farm would:

- Convert the majority of the cove to an industrial aquaculture farm
- Reduce rich biodiversity to a monoculture
- Restrict use and access to beach
- Threaten critical salmon habitat area



**We commend the moratorium imposed in British Columbia and recommend Washington State do the same.**



From their website:

“Applications for new intertidal geoduck aquaculture are currently not being accepted due to gaps in understanding of geoduck aquaculture techniques on fish habitat”

<http://www.agf.gov.bc.ca/fisheries/shellfish/geoduck/main.htm>

**Industry does not believe permits should be required**

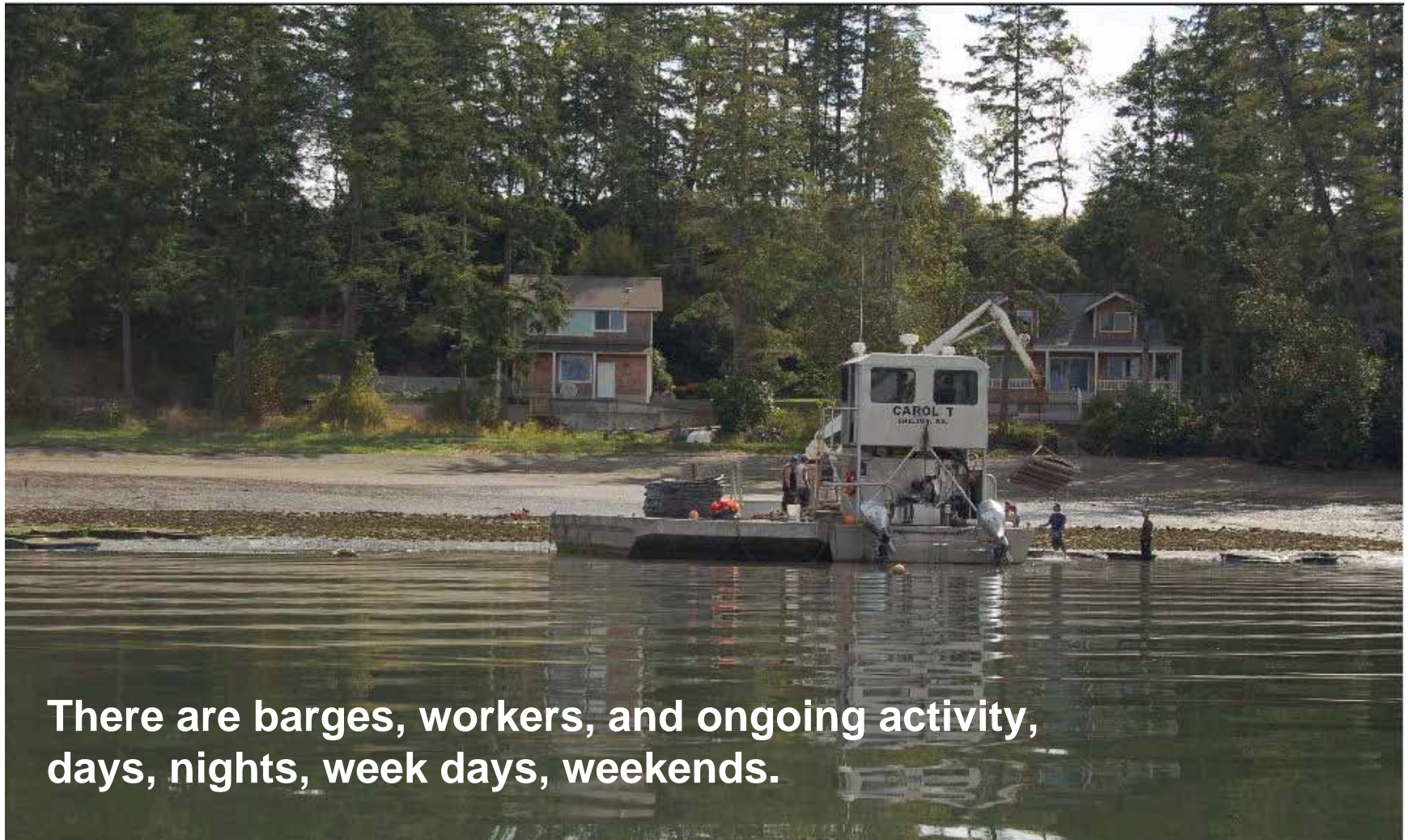


Totten Inlet, 2006



**Operations plant and harvest on a  
rotational and perpetual basis**

Taylor Foss Farm, Summer 2007



Hammersley Inlet August 2007

**Today we walk the tidelands  
with our children.**



Dutcher Cove, May 2005

We build sand castles.



2005.07.23

Dutcher Cove



## Dutcher Cove is rich in biodiversity

- Kelp crabs
- Cockle shells
- Moon snails
- Red rock crabs
- Sea Stars
- Sea Gulls
- Sand dollars
- Clingfish

**Tomorrow - aquaculture equipment and structures would displace natural habitat.**



Vexar Tunnels for geoducks - Nisqually Reach, June 30, 2007



# Aquaculture creates hazards to wildlife and humans.



**Rebar left on the beach**

Taylor Foss operation, 03/07



**Bald eagle caught in net.**

Hartstene Island Geoduck Farm  
August 10th, 2006.



**Hunting grounds for natural habitat, like this eagle...**



**and this heron...**



Dutcher Cove July 2007

**... will turn into death traps.**



**Dead crab caught under  
aquaculture net**



**Dead fish on  
aquaculture net**

Taylor Foss operation, 6/11/07



**Today - cool clear waters reflect shoreline colors...**

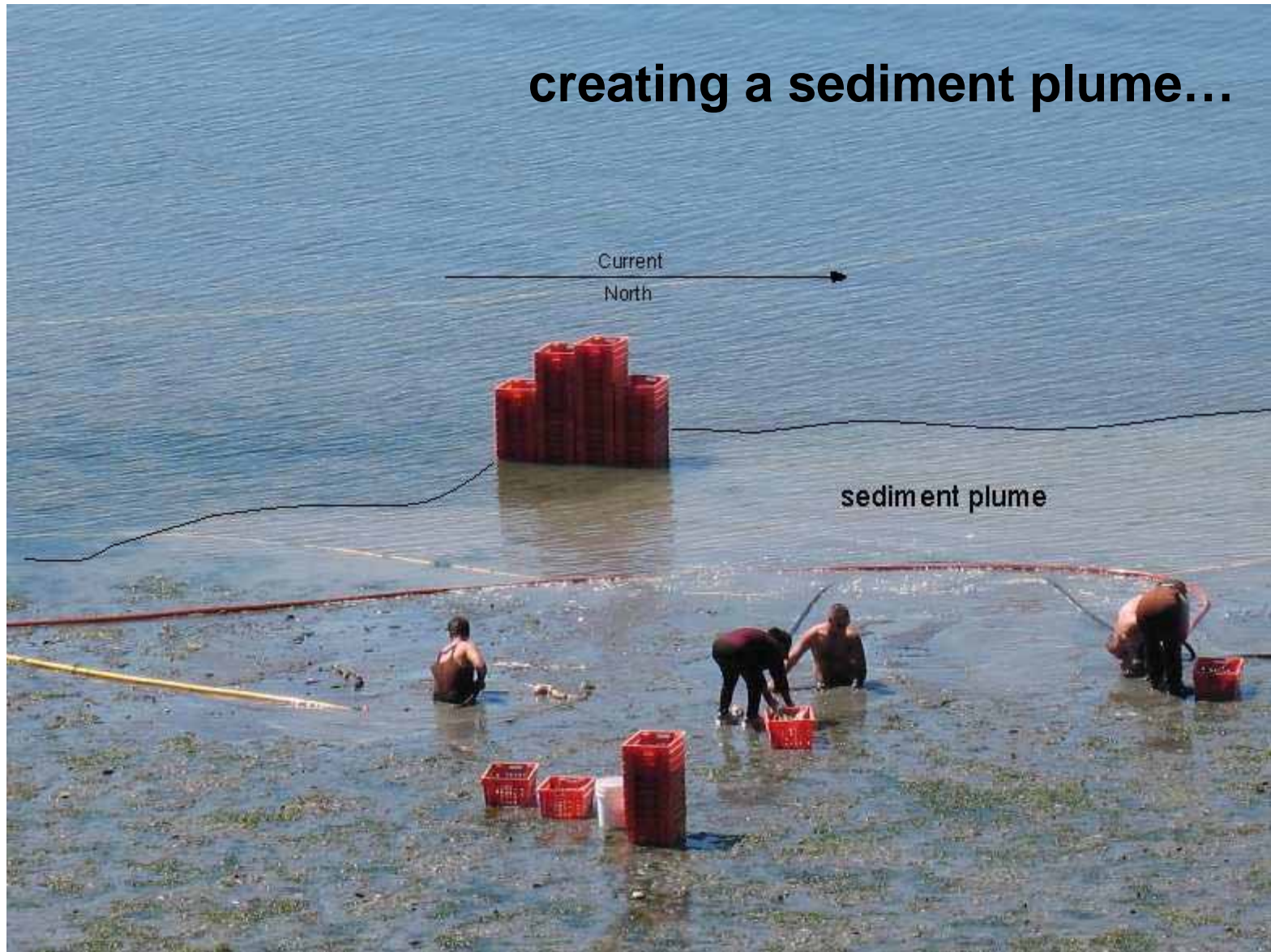
Dutcher Cove, October 2007



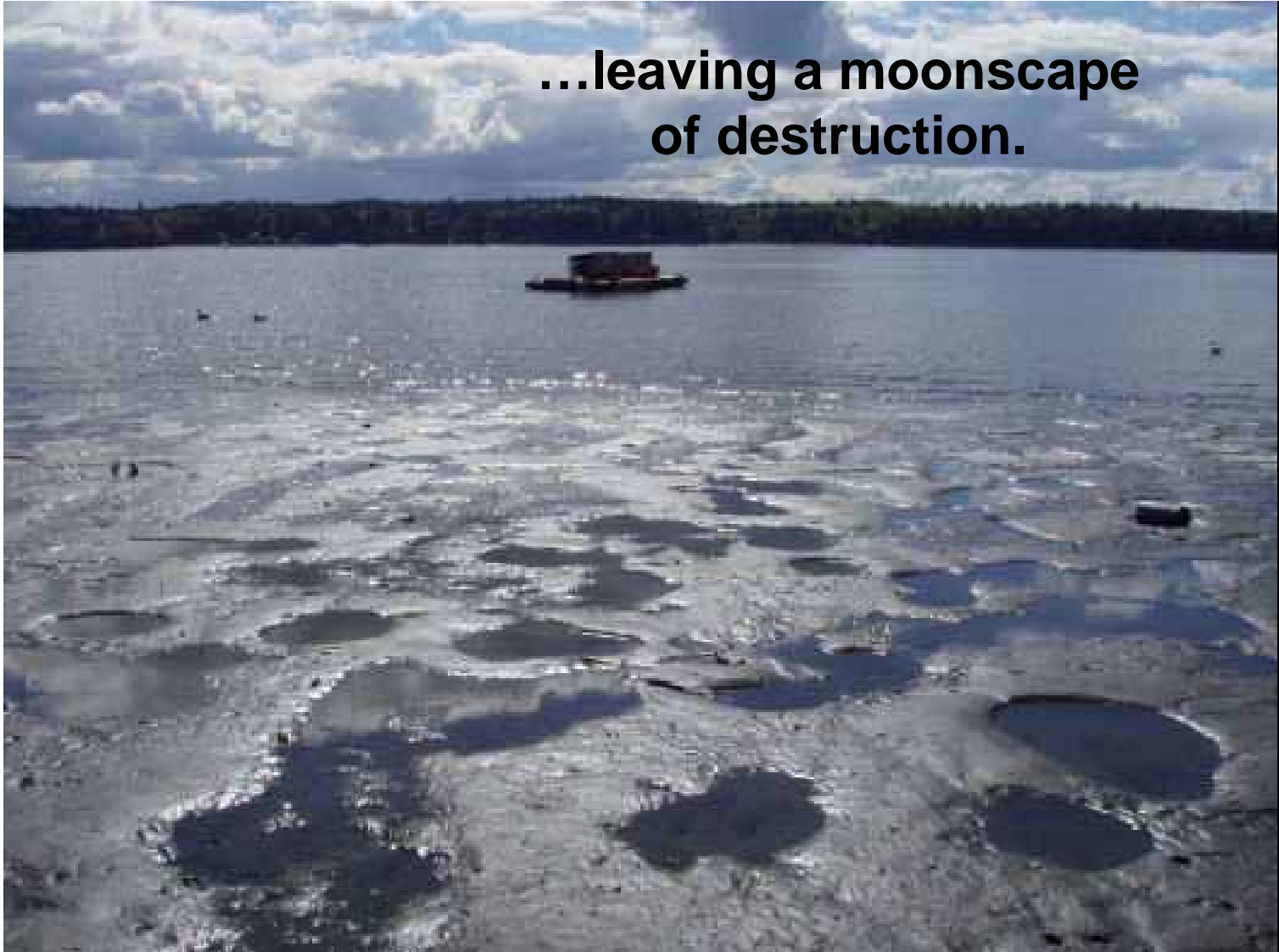
Taylor Foss Farm, 8/14/07

**Tomorrow - harvesting geoducks would  
liquefy the substrate 3 – 4 feet deep...**

# creating a sediment plume...



**...leaving a moonscape  
of destruction.**



Taylor Foss Farm, two days after harvest, 4/22/07

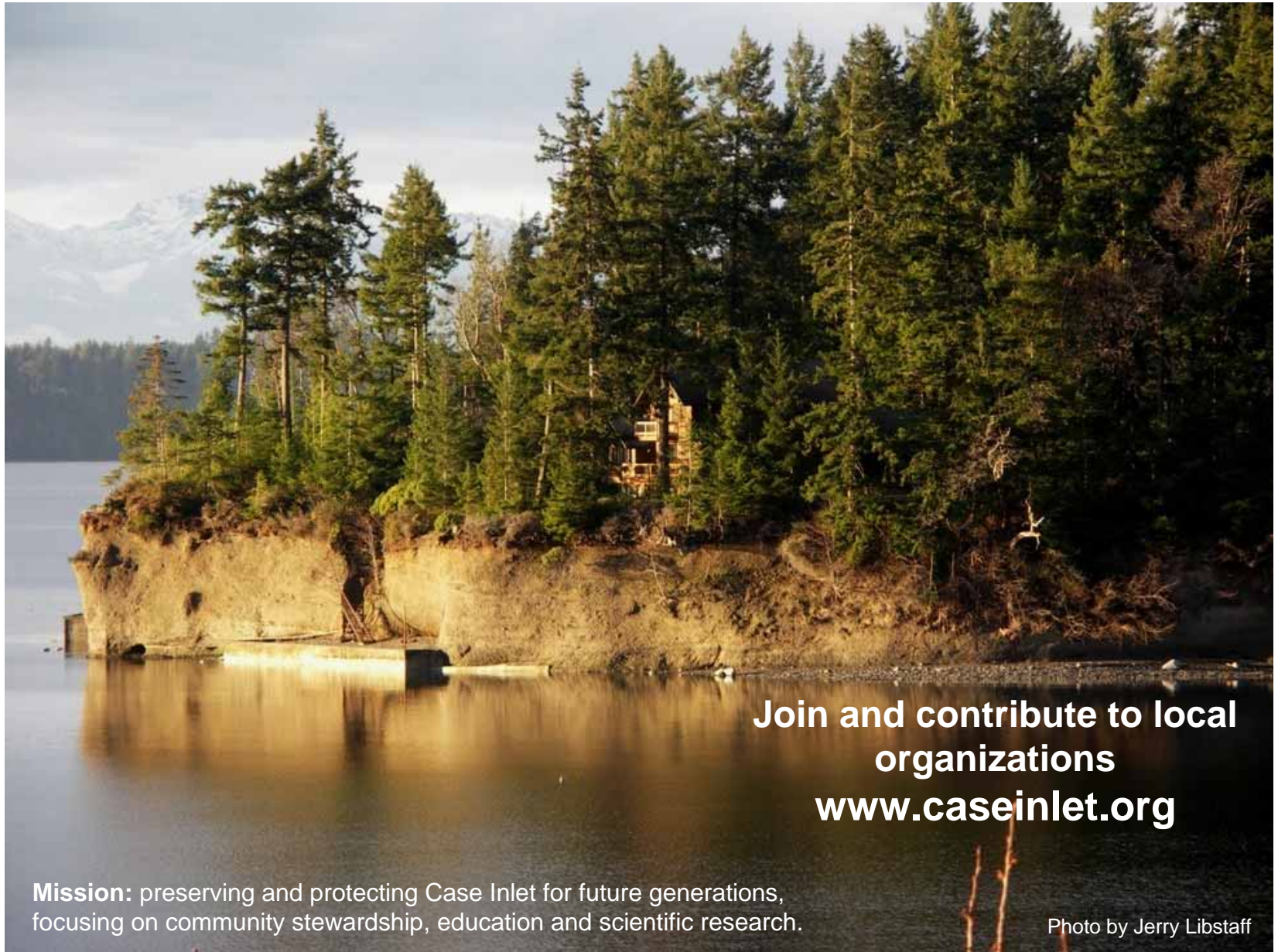
**Join our mission to protect Puget Sound  
for future generations and NOW!**



**Orcas at Dutcher Cove**

2006





**Join and contribute to local  
organizations  
[www.caseinlet.org](http://www.caseinlet.org)**

**Mission:** preserving and protecting Case Inlet for future generations,  
focusing on community stewardship, education and scientific research.

Photo by Jerry Libstaff

Dutcher Cove, December 2004